

Flyers Creek Wind Farm Newsletter

March 2017



Welcome to the latest project newsletter from Infigen Energy about the Flyers Creek Wind Farm located near Errowanbang Road, Blayney Shire Council.

Planning Modification

The Flyers Creek Wind Farm proposal was granted planning approval by the New South Wales (NSW) Government Planning Assessment Commission (PAC) in March 2014.

Infigen has been preparing a planning modification for the project which will enable three landowners to discontinue their participation in the project. The modification will include: removal of four wind turbines and associated infrastructure; an alternative alignment of the 33kV overhead power line along Errowanbang Road; and minor changes to the location of access tracks and underground cables. The updated project layout can be viewed on the next page of this newsletter.

The modification will be lodged with the Department of Planning and Environment in April 2017.

Project Facts

Number of Wind Turbines	38
Approximate capacity (with 3.6 MW wind turbine)	136.8 MW
Turbine tip height	150m
Annual generation	~350 GWh
Equivalent number of houses powered per annum	~50,000

Planning modifications and other updates can be viewed on the Department's website at:

http://majorprojects.planning.nsw.gov.au/index.pl?action=view_job&job_id=2644

Community

The Flyers Creek Wind Farm Community Consultation Committee (CCC) continues to meet on a quarterly basis to discuss the project. The latest meeting was on 26 October 2016. Minutes of the meetings are available on the Infigen website.

<https://www.infigenenergy.com/flyers-creek/>



CENREC

Infigen is grateful for the support of the Central NSW Renewable Energy Co-operative (CENREC). This community-led co-operative was formed in October 2012 with a primary purpose to enable community investment in the local area, including the Flyers Creek Wind Farm project. CENREC is also looking at opportunities for investments in solar energy projects. More information is available at:

www.cenrec.com.au



Project Layout

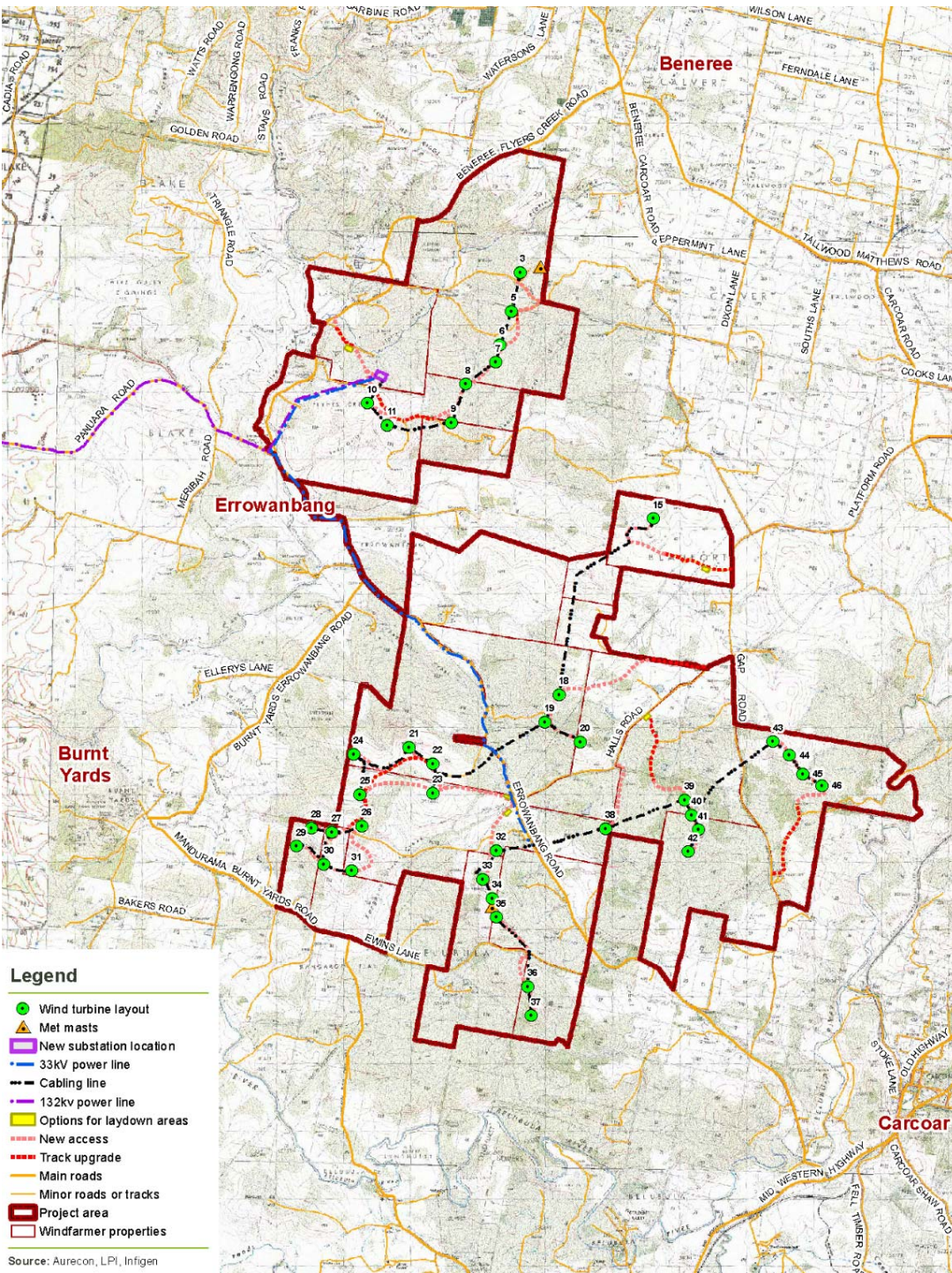
The map shows the updated project layout which will be lodged with the Department of Planning and Environment as part the planning modification.

Wind Turbines

Infigen has Project Approval to install wind turbines up to 150 metres to tip height. Since the Project Approval in 2014 there have been significant advancements in turbine technology and we expect to install greater capacity wind turbines capable of producing more energy without increasing the tip height. Infigen will run a competitive process for wind turbine supply to ensure that the optimal wind turbine model is selected for the Flyers Creek Wind Farm project.

Mailing List

If you would like to be added to the Flyers Creek Wind Farm mailing list please contact:
megan.richardson@infigenenergy.com



Next Steps

Infigen Energy is advancing its Central NSW renewable energy portfolio. Our Manildra 42.5 MW solar farm was awarded ARENA (Australian Renewable Energy Agency) funding in September 2016. Construction of the project is expected to commence in the coming months. A Power Purchase Agreement with Energy Australia for Infigen's Bodangora Wind Farm, located near Wellington, was signed in February 2017 and is progressing towards a final investment decision. Flyers Creek Wind Farm is an important part of our Central NSW portfolio and we look forward to advancing the project to a construction ready position this year.

Please contact us if you have any questions or would like to meet to discuss the project.

Megan Richardson
Ph: 02-8031-9900
E: megan.richardson@infigenenergy.com
W: www.infigenenergy.com