

Four Mile Creek Wind Farm Prospect

Community Update | December 2024

The Four Mile Creek Wind Farm Prospect (the Prospect) is about 15 km south of Orange (NSW) on Wiradjuri country. If approved, it would be built in the New South Wales Forestry Corporation Canobolas State Forest softwood plantation within Cabonne Shire Council and Orange City Council boundaries, near the Cadia mine.

The Investigation Permit was awarded to Iberdrola Australia in May 2024, allowing us to kick off a series of feasibility activities. If the Prospect is deemed feasible, we will continue developing the prospect. Planning and grid approvals are expected to take up to six years. Iberdrola Australia is also exploring a potential wind farm within the Mullions Range State Forest softwood plantation.

Community Sponsorship Fund

Applications for the first round of community sponsorships and grants are now open. Grant amounts of \$5,000 and \$10,000 are available for local groups, clubs, schools and organisations located near the site. Sponsorship applications should be submitted online by **Friday 14 February 2025** via www.iberdrola.com.au under [Community Sponsorships](#). In assessing applications, we will consider how they align with our [Community and Stakeholder Engagement Policy](#), the sustainability of the application, and whether projects can be delivered in the proposed time and budget.

Iberdrola Australia is dedicated to collaborating with local communities to ensure our projects leave meaningful, positive, and lasting legacies. Our KPMG audited [2023 Sustainability Report](#) is now available on our website and presents our sustainability initiatives and community engagement in regional Australia.

Community and Stakeholder Consultation

We've been engaging with the community and stakeholders and have spoken to almost 500 people since June this year. Some of the key questions you've had for us include:

- Location, number and size of the turbines
- Where the wind farm would connect into the electricity network
- How long the wind farms would be operational and the decommissioning process
- How we would manage bushfire risk
- The heritage value of Mount Canobolas
- Potential impacts to:
 - Regular forest activities
 - Local amenity, such as visual and noise
 - Property value
 - Local flora and fauna
 - Traffic and transport.

As we continue to work through the prospect, we will continue to provide you with information on each of these key issues.



Community engagement in Spring Hill

Next Steps

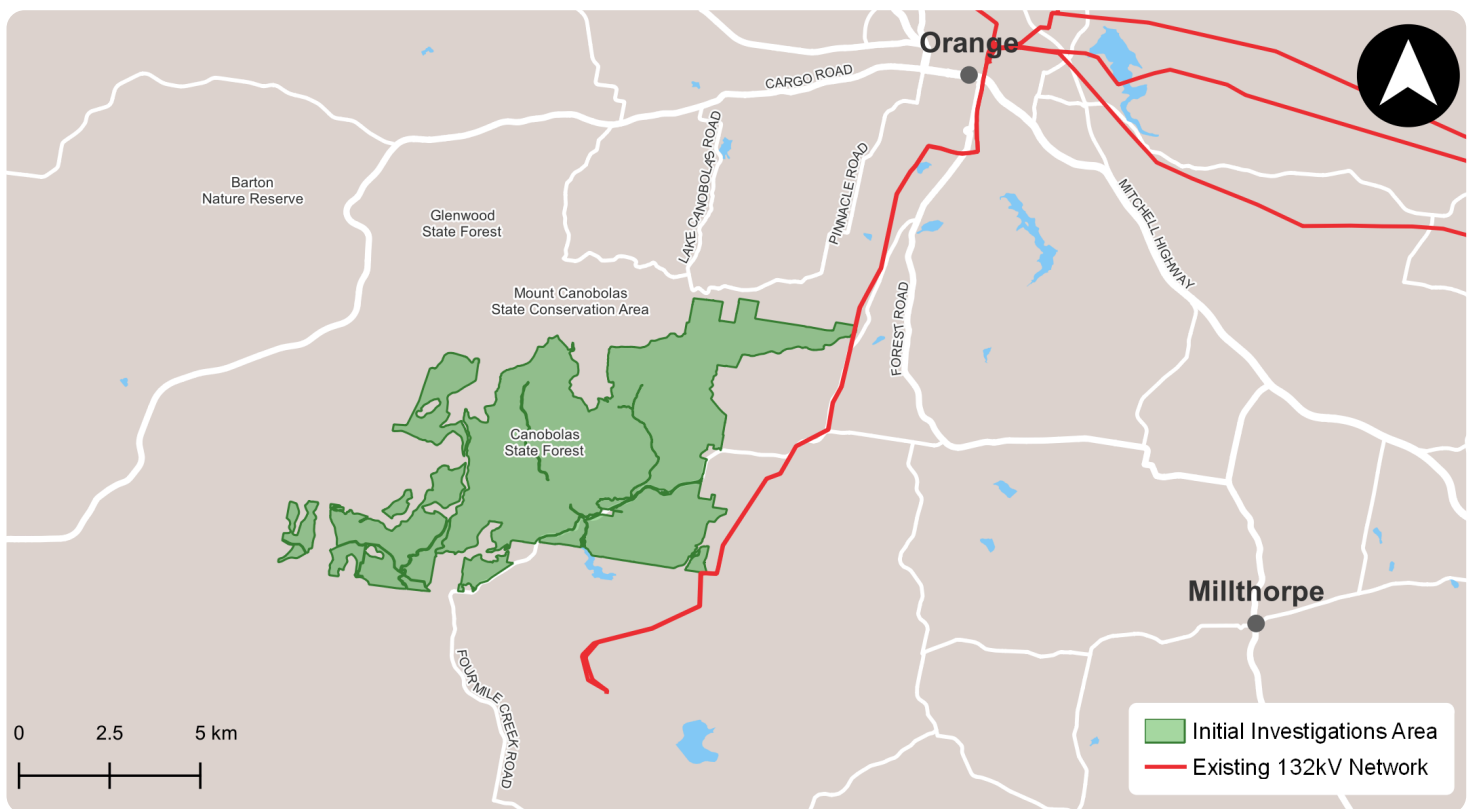
We have completed installation of meteorological masts (met masts). The met masts will provide us with a comprehensive understanding of wind conditions at the site and play an important role in helping us understand the feasibility of the prospect. Over the coming months we will:

- Continue engagement activities
- Refine the design following preliminary studies and community feedback
- Progress studies and assessments to support the Scoping Report
- Submit grid connection enquiry to support feasibility assessments.

We are also finalising a Scoping Report, which sets out the matters to be investigated in the Environmental Impact Statement (EIS) and outlines the engagement to be carried out. It also includes the outcomes of any initial studies and community engagement.

We expect the Scoping Report to be published on the NSW Planning Portal in early 2025. More information about the planning process is available on the [NSW Planning Portal](#).

Project Investigation Area



Contact Us

If you have any questions about the project, feedback or would like to share your local knowledge we are available via the contact information below.



Visit our website:

www.iberdrola.com.au



Email us and join our mailing list:

fourmilecreekwindfarm@iberdrola.com.au



Call us on 0417 543 502
or 1800 917 372