

# Canobolas WIND FARM PROSPECT

FACTSHEET | MAY-JUNE 2024



Iberdrola Australia was awarded an Investigation Permit by Forestry Corporation of New South Wales (Forestry Corporation) in late May 2024 to investigate the **potential of a wind farm on Canobolas Forest softwood plantation** (Canobolas Wind Farm). Under this Investigation Permit Iberdrola Australia is also exploring a potential wind farm within the Mullions Range State Forest softwood plantation. This investigation of wind farms within the Forestry Corporations softwood pine plantations is allowed under the 2021 amendment to the Forestry Act (2012).

Canobolas Wind Farm (the Prospect) would be located approximately 15 kilometers south of Orange (NSW), on **Wiradjuri Country** and within **Cabonne and Orange Regional Councils**. The Prospect will be developed by Iberdrola Australia in close collaboration with the Forestry Corporation. The current investigation phase is likely to take 4 - 6 years, if the prospect is considered feasible. During this period, we will conduct extensive community and stakeholder consultation and environmental and technical studies.

## Overview

### Co-Locating Renewable Energy Projects in Pine Plantations

Pine Plantations are well suited to hosting renewable energy assets, like wind farms, because they:



Are located in windy areas - **providing a world class resource opportunity**



Offer large tracts of land for strings of turbines - **minimising connection infrastructure and maximising generation potential**

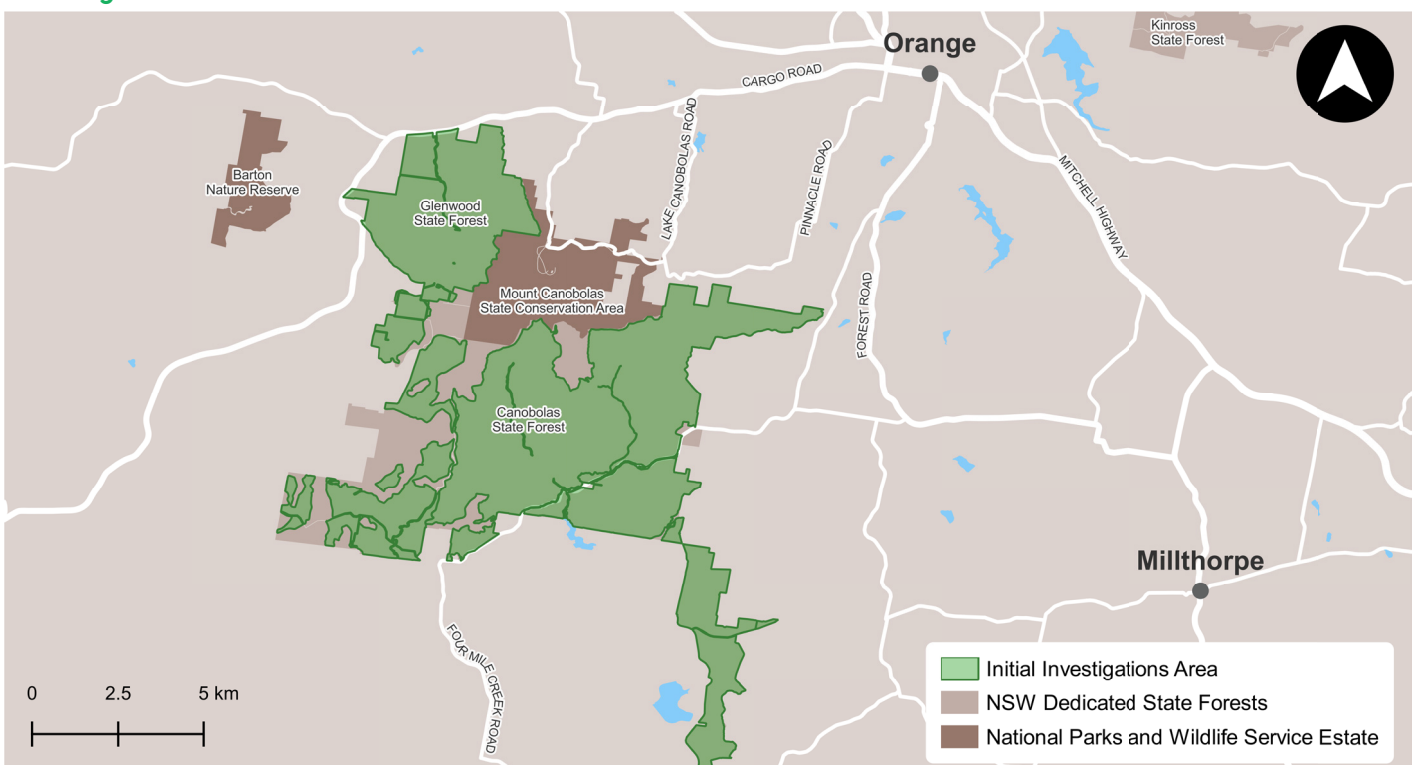


Are located away from residential areas - **minimising impacts on communities**



Have existing roads and transmission infrastructure - **minimising need for significant ground works and additional infrastructure**

### Investigation Area



## Next Steps

Under the Investigation Permit, Iberdrola Australia will undertake a number of studies to determine the suitability of the Prospect. These initial activities will include:



Community and stakeholder consultation.



Carry out environmental studies.



Complete wind monitoring.



Design the project - in consultation with community.



Negotiate grid connection.



Seek NSW Government planning approval.

We will be working with Umwelt, a leading Australian environmental, social, and planning consultancy during this period.

## Indicative Timeline

### 1. Renewable Energy Proposals Invited

Forestry Corporation reviews proposals to develop renewable energy projects on State Forest softwood pine plantations.

### 2. Investigation Permits Issued

WE ARE HERE

Forestry Corporation issues access and investigation permits to successful renewable energy companies, including Iberdrola Australia.

### 3. Community Engagement and Investigations Start

Iberdrola Australia engages with local communities and stakeholder and commences feasibility investigations.

### 4. Development Approval Process Commences (if feasible)

If deemed feasible, Iberdrola Australia submits the proposal to the Department of Planning, Housing and Industry (DPHI) for assessment.

### 5. Public Exhibition

Iberdrola Australia's proposal is displayed for formal public feedback as part of the development application process.

### 6. State Government Assesses Projects

If approved by DPHI, Iberdrola Australia will be issued a construction and operations permit by the Forestry Corporation.

### 7. Wind Farm Construction

Construction takes place and the project is commissioned.

### 8. Wind Farm Operation

Iberdrola Australia to operate the wind farm.

### 9. Wind Farm Decommissioning or Re-Powering

INVESTIGATION PERMIT (4-6 YEARS)

ONGOING COMMUNITY AND STAKEHOLDER ENGAGEMENT

CONSTRUCTION & OPERATIONS PERMIT (35+ YEARS)

## Our Commitment to Our Communities

Significant **economic investment** across the region.

Powering up to **106,000** homes. Scholarships and traineeships.

Use of **local materials, products and services** from locally based suppliers where possible, including retail, transport and hospitality.

Sponsorship of **First Nations** and other **local community initiatives**.

Local **biodiversity enhancement** initiatives.

Establishment of a **Community Benefit Fund**.

Up to **250** jobs during construction.

We strive to be **good neighbours** and **share the benefits of our projects** with the communities in which we operate. Iberdrola Australia is dedicated to collaborating with local communities to ensure that our projects, tailoring the benefits of our projects to make meaningful and long lasting social, economic, and environmental legacies.

Stay informed with updates and upcoming consultation opportunities by signing up for our project mailing list by scanning the QR code or visiting our website via the link below.



## About Us

Iberdrola has over 20 years of experience of being a developer, owner and operator of renewable energy assets in Australia. Our portfolio includes 1.7 gigawatts (GW) of renewable energy generation with additional firming assets. **Through our partnership with the Forestry Corporation, Iberdrola Australia continues to strive for a brighter future.**

For further details on Forestry Corporation renewable energy projects, visit their website via the link below.

## Website Details



Visit Iberdrola Australia Project Website: <https://www.iberdrola.com.au/our-assets/development-assets>



Visit the Forestry Corporation Website: <https://www.forestrycorporation.com.au/sustainability/renewable-energy>

## Contact Details

If you have any questions, initial feedback, local knowledge or suggestions, please reach out via the contact details below.



Email Us: [canobolaswindfarm@iberdrola.com.au](mailto:canobolaswindfarm@iberdrola.com.au)



Call us on 1800 917 372 (24h, free within Australia)