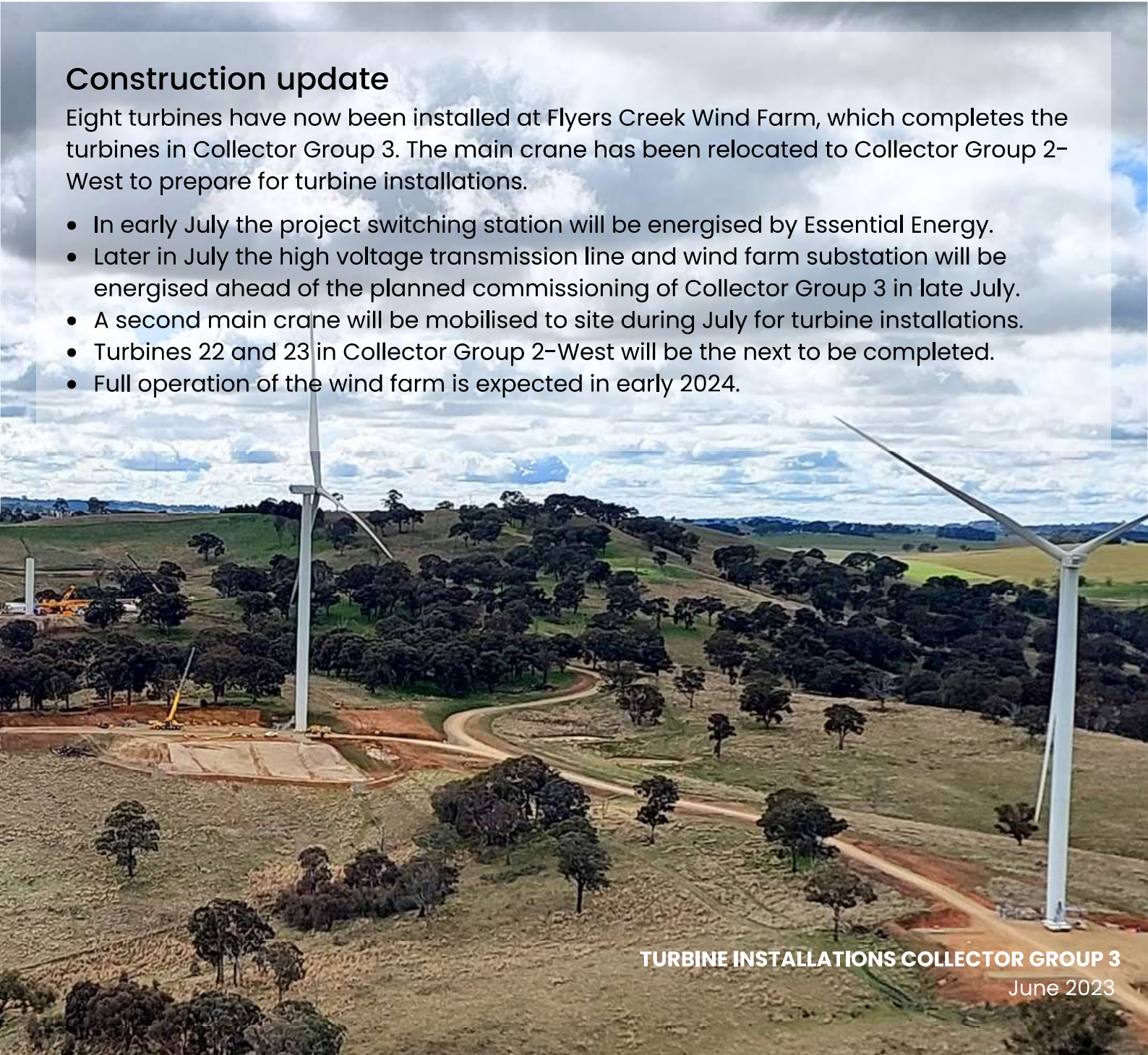


Construction update

Eight turbines have now been installed at Flyers Creek Wind Farm, which completes the turbines in Collector Group 3. The main crane has been relocated to Collector Group 2-West to prepare for turbine installations.

- In early July the project switching station will be energised by Essential Energy.
- Later in July the high voltage transmission line and wind farm substation will be energised ahead of the planned commissioning of Collector Group 3 in late July.
- A second main crane will be mobilised to site during July for turbine installations.
- Turbines 22 and 23 in Collector Group 2-West will be the next to be completed.
- Full operation of the wind farm is expected in early 2024.



TURBINE INSTALLATIONS COLLECTOR GROUP 3
June 2023

TIMELINE TO COMPLETION - TURBINE INSTALLATION

COLLECTOR GROUP 3	<i>Turbine installations completed in June 2023</i>
COLLECTOR GROUP 2-WEST	<i>Expected completion date is July/August 2023</i>
COLLECTOR GROUP 1-WEST	<i>Expected completion date is August/September 2023</i>
COLLECTOR GROUP 2-EAST	<i>Expected completion date is late 2023</i>
COLLECTOR GROUP 1-EAST	<i>Expected completion date is late 2023</i>

FLYERS CREEK WIND FARM PROJECT LAYOUT COLLECTOR GROUPS

	APA GAS LINE
	TURBINE NUMBER
	ACCESS TRACK
	EXISTING MET MAST
	TEMPORARY MET MAST
	FUTURE PERMANENT MET MAST
	PROPOSED OPTUS TOWER
	132 KV TRANSMISSION LINE OH
	33 KV CABLING LINE UG
	33 KV CABLING LINE OH
	11 KV LINE - EXISTING
	EXISTING FENCE
	PROPOSED EXTERNAL ROAD UPGRAD
	GAP ROAD UPGRADE

FLYERS CREEK AT A GLANCE

- Number of Turbines: 38
- Capacity: 145 Megawatts
- Turbine blade tip height: 160m
- Developer: Iberdrola Australia
- Construction contractor: GLC

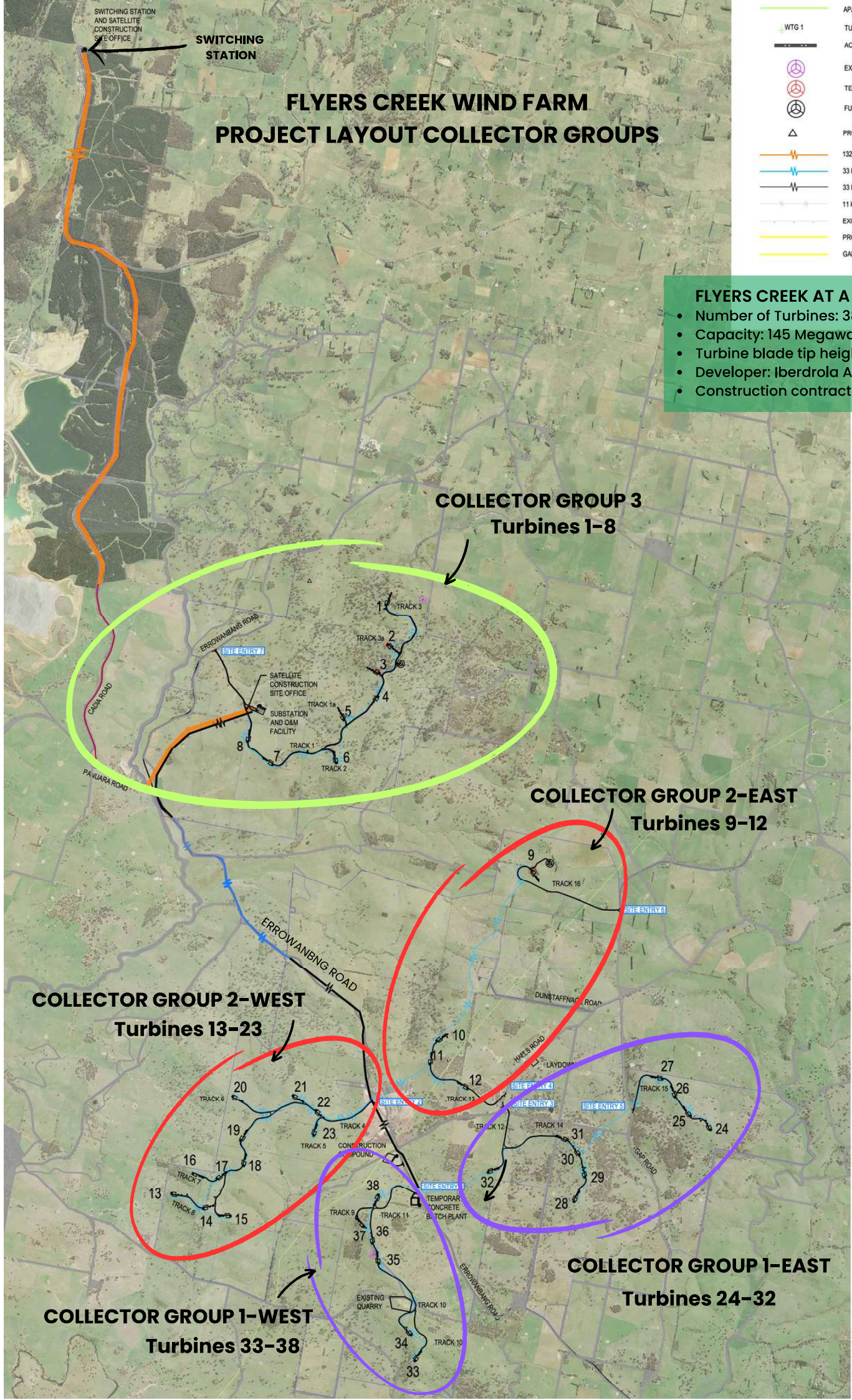
**COLLECTOR GROUP 3
Turbines 1-8**

**COLLECTOR GROUP 2-EAST
Turbines 9-12**

**COLLECTOR GROUP 2-WEST
Turbines 13-23**

**COLLECTOR GROUP 1-EAST
Turbines 24-32**

**COLLECTOR GROUP 1-WEST
Turbines 33-38**



Flyers Creek Wind Farm

Construction Newsletter No. 14

June 2023



Assembly of Turbine 1 in Collector Group 3
27 June 2023

Collector Group 3 observers



Assembly of Turbine 2 in Collector Group 3
1 June 2023

Flyers Creek Wind Farm

Construction Newsletter No. 14

June 2023



Collector Group 3 turbines, 14 June 2023



Bird's-eye view from the top of a turbine in Collector Group 3
June 2023

Flyers Creek Wind Farm

Construction Newsletter No. 14

June 2023

COLLECTOR GROUP 2-WEST

- All eleven turbine foundations have now been constructed in Collector Group 2-West
- Turbine components have been delivered and base tower sections installed for seven out of the 11 turbines in Collector Group 2-West: Turbines 17, 18, 19, 20, 21, 22 and 23



Preparations to unload the first blade at
Turbine 17 in Collector Group 2-West
20 June 2023

HIGH VOLTAGE POWER LINE

Construction of the overhead section of the 132kV powerline between the wind farm substation and the switching station is complete with testing underway ahead of energisation. Rehabilitation of the overhead line corridor has begun in consultation with NSW Forestry.

Construction of the underground section of the 132kV powerline adjacent to Cadia and Panuara Roads is being tested completion ahead of energisation during July. Rehabilitation of the underground corridor is being planned.



Stringing of 132kV overhead powerline
8 June 2023

Energised power lines

- The high voltage transmission line for the wind farm is being prepared to be commissioned and energised.
- Powerlines and associated infrastructure should be considered live.
- Markers are in place along the Cadia Road easement to denote underground powerlines.

Roads and traffic

The delivery of turbine components via Errowanbang Road is ongoing. When approaching an oversized delivery of turbine components:

- Please reduce your speed
- Prepare to stop if necessary
- Please be patient and do not overtake, you will be given an opportunity to pass when it is safe
- Follow instructions given by the traffic escort

We apologise for extended journey times which local road users may experience

Gap and Halls Road

There will be increasing traffic on Gap and Halls Roads as construction work progresses including concrete trucks for turbine foundation pours.

Road repair and reshaping works have commenced on Gap Road ahead of turbine deliveries later in the year.

Errowanbang Road

Repairs to Errowanbang Road are continuing as a priority. Within Collector Group 2–West, GLC and contractors are crushing rock on site to limit the import of rock from offsite quarries. This reduces the number of construction trucks using Errowanbang Road for the project.

Errowanbang and Gap Road night closures

A number of night closures of Errowanbang Road are required for the installation of electrical cabling for the Flyers Creek Wind Farm. Six night closures were carried out from late May to the end of June. Further road closures are planned from late July 2023.

There are also road closures planned for Gap Road in the coming months.

Traffic notices will be circulated to our mailing list ahead of the closures, which will appear on livetraffic.com.

For further information about Flyers Creek Wind Farm, or to be added to our mailing list please email: flyerscreek@iberdrola.com.au

You can also provide feedback about the project to Iberdrola by phone or post at all times:

- Phone (24-hour line): 1800 917 372
- Post: Iberdrola Australia, Level 17, 56 Pitt Street, Sydney, NSW, 2000

<https://www.iberdrola.com.au/our-assets/development-assets/flyers-creek-wind-farm/>

Flyers Creek Wind Farm

Construction Newsletter No. 14

June 2023



Substation

The wind farm substation is nearing completion ahead of energisation during July.

Switching station

The switching station at the northern end of the project site off Cadia Road is also nearing completion ahead of connection to the existing Cadia to Orange 132kV network.

Medium voltage powerline

Construction of the 33kV powerline within the wind farm project area is progressing well. The overhead section of the 33kV line adjacent to Errowanbang Road commenced during April and will continue over the coming months. This work will also cause traffic delays on Errowanbang Road which we aim to keep to a minimum.



For further information about Flyers Creek Wind Farm, or to be added to our mailing list please email: flyerscreek@iberdrola.com.au

You can also provide feedback about the project to Iberdrola by phone or post at all times:

- Phone (24-hour line): 1800 917 372
- Post: Iberdrola Australia, Level 17, 56 Pitt Street, Sydney, NSW, 2000

<https://www.iberdrola.com.au/our-assets/development-assets/flyers-creek-wind-farm/>

Collector Group 2-East and 1-East

Construction of access tracks continue in the project areas east of Errowanbang Road. The photo below shows the construction of a rock mattress in Collector Group 2-East, used to bridge over soft/weak areas of subgrade in the road construction.



Blasting

Due to geotechnical conditions on site, controlled blasts are required at some turbine foundations, with the first commencing in mid-December 2022. For those locations where blasting is required, one controlled blast per turbine foundation is expected.

The controlled blasts are contained with exclusion zones implemented and neighbours are notified ahead of the blasting work.

Out of hours work

Standard construction hours are generally restricted to 7am to 6pm Monday to Friday and 8am to 1pm Saturday. Since November 2022 some construction activities at Flyers Creek have been carried out on Saturday afternoons and Sundays.

The work does not involve any highly intrusive noise generating activities, with no heavy vehicle truck movements on public roads on Sundays.

The out of hours work may also include turbine installations as this work requires optimal weather conditions, specifically low winds. The turbine installation work may continue between 6pm and 12am weekdays and on Saturday afternoons and Sundays in favourable weather conditions.

The turbine installation work will only occur outside standard construction hours if weather conditions are favourable.

For further information about Flyers Creek Wind Farm, or to be added to our mailing list please email: flyerscreek@iberdrola.com.au

You can also provide feedback about the project to Iberdrola by phone or post at all times:

- Phone (24-hour line): 1800 917 372
- Post: Iberdrola Australia, Level 17, 56 Pitt Street, Sydney, NSW, 2000

<https://www.iberdrola.com.au/our-assets/development-assets/flyers-creek-wind-farm/>

MEET THE TEAM

DALE WIESSNER SITE REPRESENTATIVE



Dale works for the Jacobs team of engineers, who act as project managers on site for Iberdrola Australia. Jacobs works closely with GLC, our Construction Contractor

Dale lives in the Blue Mountains and has supported the Canterbury Bulldogs for as long as he can remember

What does your role involve from day to day?

Progress tracking, overcoming site challenges, engaging with the site team, contractors, landowners, Council, Forestry and, neighbours. And helping ensure the project is compliant with our planning obligations.

Is Flyers Creek very different to your previous project?

My last role was the balance of plant manager for construction of the Dulacca Wind Farm in Queensland. Flyers Creek is my first renewable project in NSW and has much hillier terrain (Dulacca was pancake flat). Flyers Creek also has far more site landowner families.

What drew you to working in renewables?

The arrival of my second daughter in 2009. It occurred to me that a job in renewables would be in the best interests of my children and their future.

What do you like about working at Flyers Creek?

Like other renewables projects, I find my colleagues a pleasure to work with. Flyers Creek has a workforce of varied professional experiences, interests and cultures, that work together to focus on a common goal. Despite project challenges, we can collaborate.

What is the most challenging part of your job?

Ensuring that the needs of all stakeholders are respectfully considered when planning. It can be tempting to make a swift decision under pressure, however this may overlook planning restrictions, landowner's preferences, contractor's commercial arrangements, or have an undesirable flow on effect. It is important to consider all of these factors.

How do you spend your down time?

Biking, four-wheel driving and camping with my three kids and my partner.

For further information about Flyers Creek Wind Farm, or to be added to our mailing list please email: flyerscreek@iberdrola.com.au

You can also provide feedback about the project to Iberdrola by phone or post at all times:

- Phone (24-hour line): 1800 917 372
- Post: Iberdrola Australia, Level 17, 56 Pitt Street, Sydney, NSW, 2000

<https://www.iberdrola.com.au/our-assets/development-assets/flyers-creek-wind-farm/>