

Mount Doran Battery Factsheet

Elaine Terminal Station

Iberdrola Australia is proposing to develop, construct, own and operate a large-scale battery energy storage system (BESS) called the Mount Doran Battery.

Project Overview

The Mount Doran Battery is proposed to have capacity of up to 200 megawatts (MW) and 2 hours storage. That's enough to power approximately 27,000 homes.

It will connect directly into the existing Elaine Terminal Station operated by Australian Energy Operations. The Battery, including ancillary infrastructure, would need a total land area of approximately 3.5 hectares (ha). We have included a map of the location below.

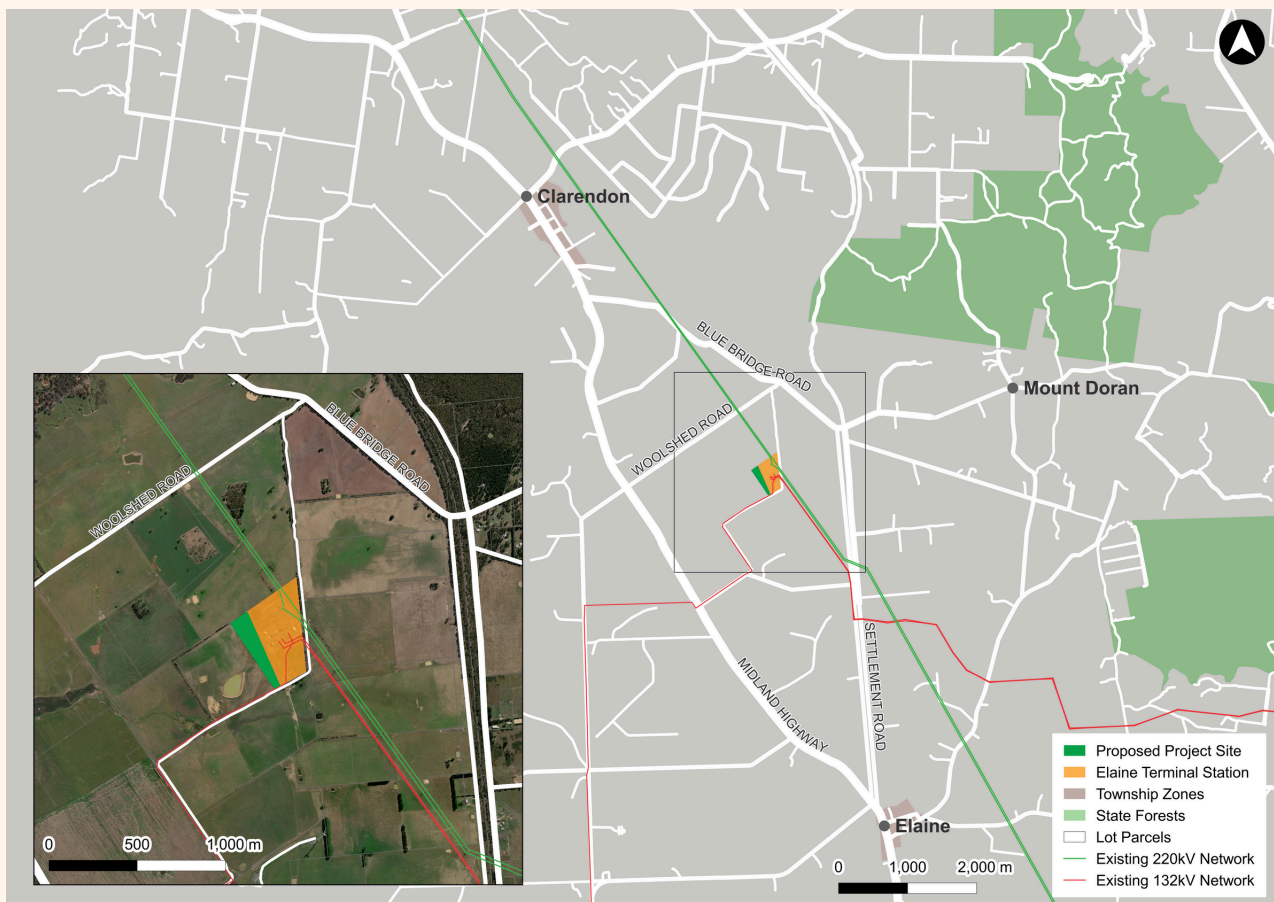


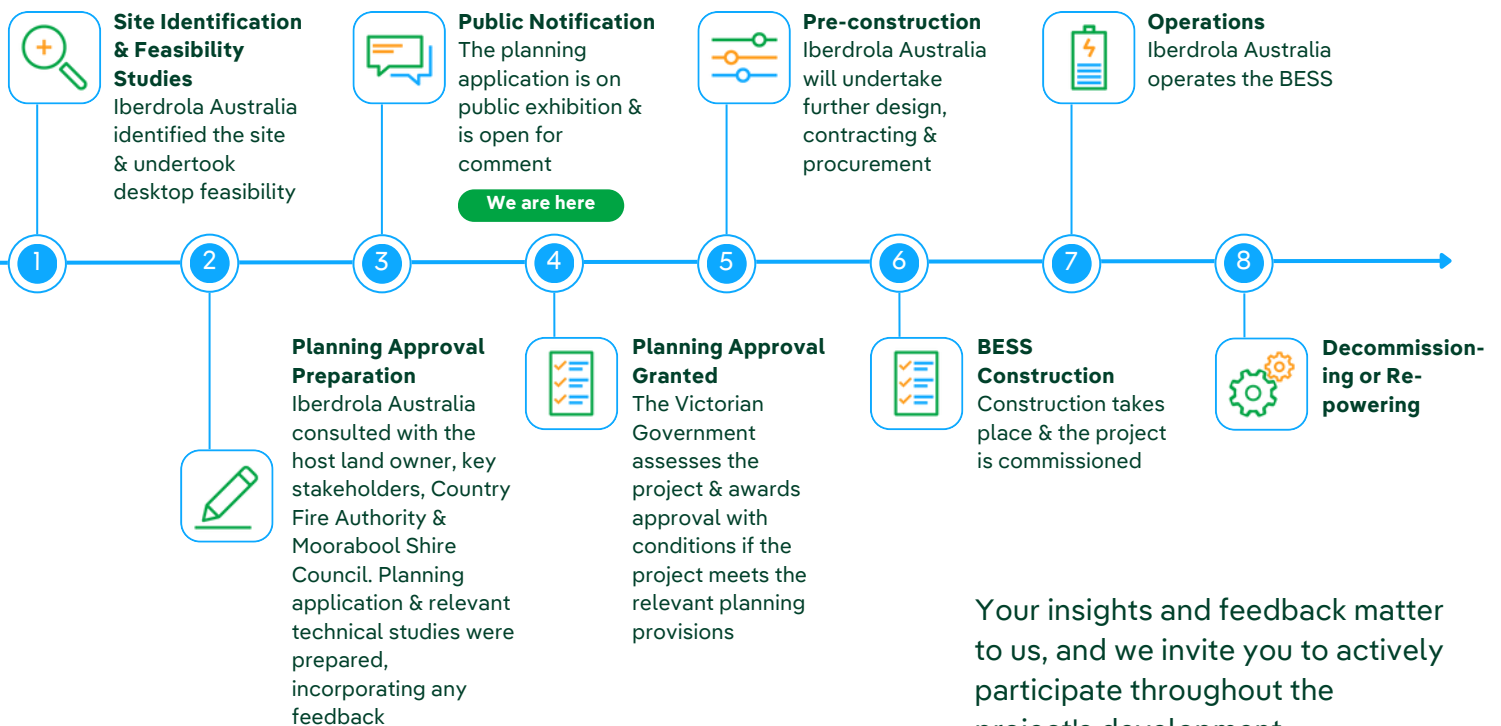
Figure 1. Mount Doran Battery Project Location

The process of developing a BESS

The Mount Doran Battery Project is going through a rigorous approval process led by the Victorian Minister for Planning. A Permit Application was lodged in August 2024, which included:

- Summary of our environment and heritage studies.
- Technical assessments.
- Community consultation.

We have included a project timeline below.



Your insights and feedback matter to us, and we invite you to actively participate throughout the project's development.

What would the battery (or BESS) look like?

A big battery, sometimes called a grid-scale battery or a BESS, uses similar battery technology to a laptop or mobile phone but at a larger scale. Big batteries typically use hundreds of lithium-ion battery packs arranged in outdoor cabinets between the size of a large domestic refrigerator up to a standard shipping container.

Lake Bonney Battery, one of Iberdrola Australia's operational battery projects located in South Australia, is shown in the photo. The capacity of Lake Bonney Battery is 25 MW with 2 hours of storage. The battery itself takes up an area of around 0.3 ha.



Figure 2. Lake Bonney Battery in South Australia

Managing fire risk

There are no foreseeable risks with the battery during normal operations due to the many safeguards used in the design of the battery facility and the safety features of the equipment.

Iberdrola Australia will use batteries that have passed the highest level of safety certification (UL 9540A) and are designed to be one of the safest battery storage products of its kind. In the unlikely scenario that a fire was to occur, this certification provides assurances that the fire event would be contained. What that means is, it would not spread to the whole site—only a very limited number of equipment cells would be impacted.

You can learn more about how we manage fire risk by reading the Mount Doran Battery Frequently Asked Questions document.

Community benefits

Iberdrola Australia is committed to working with local communities and stakeholders to ensure our projects deliver positive long-lasting benefits.

Iberdrola Australia consistently strives for best practice through being a good neighbour, establishing long-term responsive relationships, and ensuring we are an integral member of the local communities to our operations. We collaborate through our community engagement processes, seeking feedback and contribution of ideas for benefit sharing initiatives and legacies.

We welcome sponsorship applications which can be submitted through the [project website](#).



Community session

Join our Mailing List

If you would like to join our mailing list and receive updates on the project please email the Project Team at mountdoranbattery@iberdrola.com.au.



Elaine Terminal Station



Elaine Terminal Station

Opportunities for involvement

If you, or anyone you know, is interested in future supplier and/or contractor opportunities throughout the construction and/or operations phase of the Mount Doran Battery, they may register their interest by sending an email to mountdoranbattery@iberdrola.com.au.

About Iberdrola Australia

Iberdrola Australia operates a 1.7 gigawatt portfolio of renewable energy and firming assets including wind farms and batteries. As a long-term operator, we are active in regional communities across the country, reflecting our 20 years experience in the renewable energy sector. We place a high value on building trusted relationships with our host communities through open and honest communication, proactive consultation, and best practice engagement based on inclusiveness and fairness.



Contact Us

If you have any questions about the project, feedback, or would like to share your local knowledge, we are available via the contact information below.



Visit our website:
www.iberdrola.com.au



Email the Project Team:
mountdoranbattery@iberdrola.com.au



Call the Stakeholder Manager:
0417 543 502

Acknowledgement of Country

Iberdrola Australia respectfully acknowledges the Traditional Owners of Wadawurrung Country and their enduring connection to their ancestral lands and waters. We pay our respects to the Traditional Owners who have gone before, who are living today and who are yet to be born. We honour the Aboriginal and Torres Strait Islander peoples, their living experiences, and their enduring connection with Country to which they belong.