

## Construction update

- Iberdrola Australia is pleased to announce that Flyers Creek Wind Farm has begun exporting green energy to the electricity grid
- This major milestone was achieved on 31 August when Turbine 7 in Collector Group 3 generated its first kilowatt of electricity
- All eight turbines in Collector Group 3 are due to be commissioned during September
- More favourable weather conditions during August assisted the assembly of five turbines in Collector Group 2-West
- Sixteen turbines have now been installed at Flyers Creek
- Turbine installations will continue in Collector Group 2-West during September 2023
- There are now two main installation cranes working in Collector Group 2-West
- Earthworks are continuing in Collector Groups 1-West, 2-East and 1-East



Turbines 19 & 18 fully installed  
Turbines 17, 14 & 13 partly installed  
Collector Group 2-West  
9 August, 2023

### TIMELINE TO COMPLETION – TURBINE INSTALLATION

COLLECTOR GROUP 3	Turbine installations completed in June 2023
COLLECTOR GROUP 2-WEST	Expected completion date is September 2023
COLLECTOR GROUP 1-WEST	Expected completion date is now October 2023
COLLECTOR GROUP 2-EAST	Expected completion date is late 2023
COLLECTOR GROUP 1-EAST	Expected completion date is now early 2024

Full operation of the wind farm is expected by early 2024

# FLYERS CREEK WIND FARM PROJECT LAYOUT COLLECTOR GROUPS

	APA GAS LINE
	TURBINE NUMBER
	ACCESS TRACK
	EXISTING MET MAST
	TEMPORARY MET MAST
	FUTURE PERMANENT MET MAST
	PROPOSED OPTUS TOWER
	132 KV TRANSMISSION LINE OH
	33 KV CABLING LINE UG
	33 KV CABLING LINE OH
	11 KV LINE - EXISTING
	EXISTING FENCE
	PROPOSED EXTERNAL ROAD UPGRAD
	GAP ROAD UPGRADE

**FLYERS CREEK AT A GLANCE**

- Number of Turbines: 38
- Capacity: 145 Megawatts
- Turbine blade tip height: 160m
- Developer: Iberdrola Australia
- Construction contractor: GLC

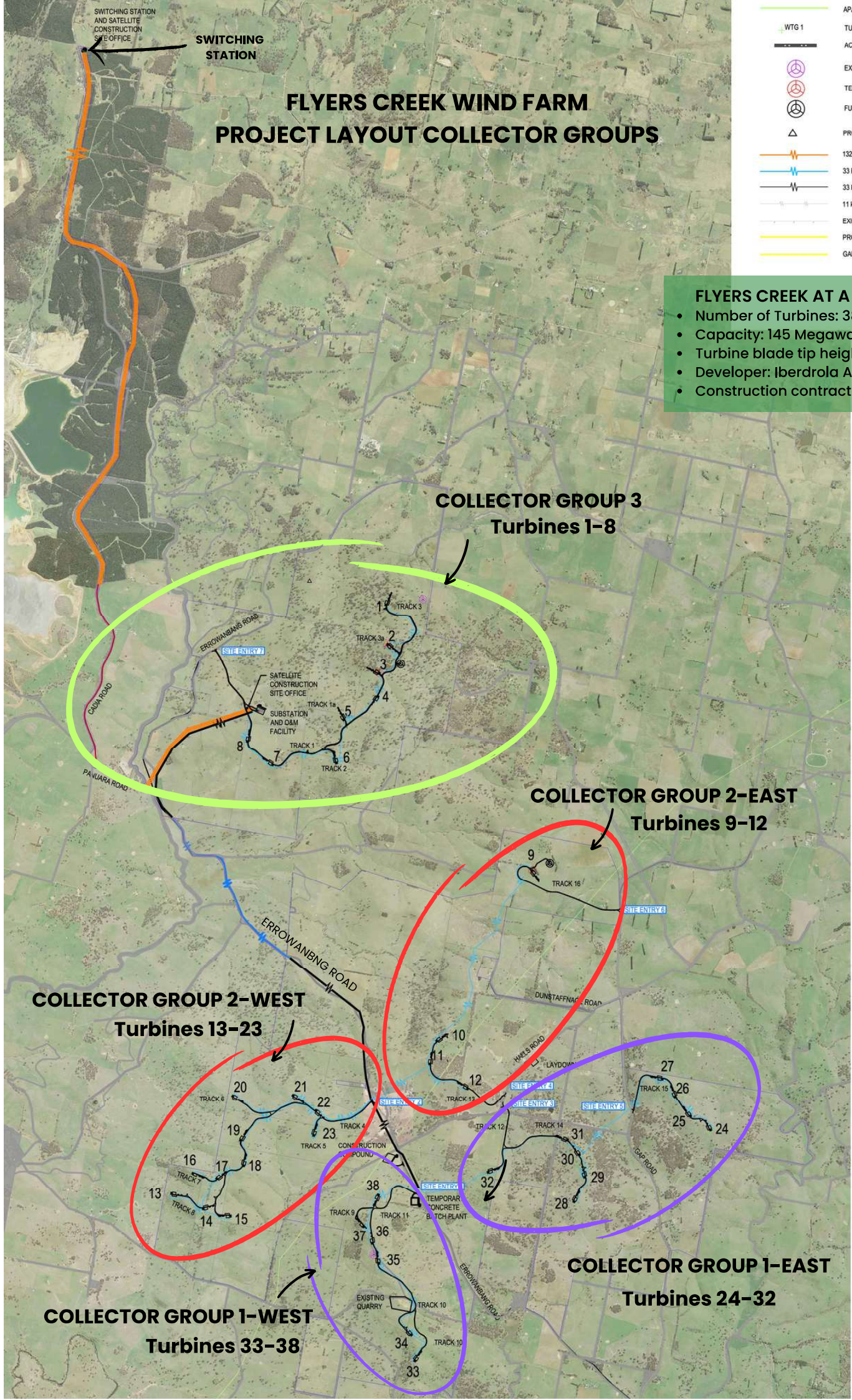
**COLLECTOR GROUP 3  
Turbines 1-8**

**COLLECTOR GROUP 2-EAST  
Turbines 9-12**

**COLLECTOR GROUP 2-WEST  
Turbines 13-23**

**COLLECTOR GROUP 1-EAST  
Turbines 24-32**

**COLLECTOR GROUP 1-WEST  
Turbines 33-38**





Turbines in Collector Group 3



### **Blayney Shire Council site visit**

On 7 August, 2023 Councillors and staff from Blayney Shire Council toured Collector Group 3 of Flyers Creek Wind Farm.

Iberdrola staff were pleased to introduce the first completed wind farm Collector Group to Council.

Blayney Shire Councillors and staff at Turbine 1

# Flyers Creek Wind Farm

Construction Newsletter No. 16

August 2023



Turbine 19, installation of second blade  
Collector Group 2-West  
1 August, 2023



Turbine 19, three blades installed  
Collector Group 2-West  
2 August, 2023



# Flyers Creek Wind Farm

Construction Newsletter No. 16

August 2023



Turbine 13, assembly of first tower section  
Collector Group 2-West  
4 August, 2023



Main crane at Turbine 18  
Collector Group 2-West  
4 August, 2023





View of Collector Group 2–West from  
Collector Group 1–West  
2 August, 2023

## SITE REHABILITATION

Site rehabilitation works have been completed over recent months with more work to proceed as construction progresses.

Rehabilitation work is ongoing in the following areas:

- The high voltage overhead powerline corridor adjacent to Cadia Road, in consultation with NSW Forestry
- The high voltage underground powerline corridor along Panuara and Cadia Roads including culverts, areas of road pavement and the road reserve (reshaping of drains, stormwater and other Council infrastructure works)
- Reshaping of drains along Errowanbang Road adjacent to the underground section of the medium voltage powerline
- Soil and vegetation rehabilitation across the wind farm footprint where the ground surface has been disturbed by earthworks
- Landscaping at the switching station will be completed over the coming months

For further information about Flyers Creek Wind Farm, or to be added to our mailing list please email: [flyerscreek@iberdrola.com.au](mailto:flyerscreek@iberdrola.com.au)

You can also provide feedback about the project to Iberdrola by phone or post at all times:

- Phone (24-hour line): 1800 917 372
- Post: Iberdrola Australia, Level 22 Governor Phillip Tower, 1 Farrier Place, Sydney, NSW, 2000

<https://www.iberdrola.com.au/our-assets/development-assets/flyers-creek-wind-farm/>

#### WIND FARM ELECTRICITY NETWORK



Construction of medium voltage powerline within the wind farm site  
4 August, 2023

#### High voltage powerline

The new 132kV underground and overhead powerline adjacent to Cadia Road is energised and has been commissioned.

#### Medium voltage network

The underground section of the 33kV powerline adjacent to Errowanbang Road is nearing completion.

The pole foundation concrete pours for the overhead section of the 33kV powerline along Errowanbang Road have been completed. Construction work will continue on the 33kV overhead lines during September.

#### Energised power lines

- All wind farm powerlines and associated infrastructure should be considered live
- Markers are in place along public road easements to denote underground powerlines

#### Switching station

The switching station (at the northern end of the site off Cadia Road) is now connected to the existing Cadia to Orange 132kV network.

#### Substation

The wind farm substation in Collector Group 3 has been commissioned. When the wind turbines are generating electricity, transformers at the substation will step up the voltage from 33kV to 132kV for export to the grid.



Blades of Turbine 7 in Collector Group 3 turning to export the first electricity from Flyers Creek  
31 August, 2023

#### **ROADS AND TRAFFIC**

##### **Delivery of turbine components**

The delivery of turbine components via Errowanbang Road is continuing. When approaching an oversized vehicle:

- Please reduce your speed and prepare to stop if necessary
- Please be patient and do not overtake, you will be given an opportunity to pass when it is safe
- And please follow instructions given by the traffic escort

##### **We apologise for extended journey times which local road users may experience**

Turbine 19 final blade being installed  
Collector Group 2-West  
1 August, 2023

##### **Gap and Halls Roads**

Road repair, reshaping and road widening works are continuing on Gap and Halls Roads ahead of turbine deliveries later in the year.

Construction traffic on Gap and Halls Roads has increased as site earthworks progress.

##### **Errowanbang Road**

Construction of the overhead powerline poles for the medium voltage line is progressing along Errowanbang Road. Traffic control may be in place for short periods.

A number of additional closures of Errowanbang will be required in the coming months. The road closures will be planned for minimal disruption.

Traffic notices will be circulated to our mailing list ahead of the closures, which will appear on [livetraffic.com](https://www.livetraffic.com).

For further information about Flyers Creek Wind Farm, or to be added to our mailing list please email: [flyerscreek@iberdrola.com.au](mailto:flyerscreek@iberdrola.com.au)

You can also provide feedback about the project to Iberdrola by phone or post at all times:

- Phone (24-hour line): 1800 917 372
- Post: Iberdrola Australia, Level 22 Governor Phillip Tower, 1 Farrier Place, Sydney, NSW, 2000

<https://www.iberdrola.com.au/our-assets/development-assets/flyers-creek-wind-farm/>



# Flyers Creek Wind Farm

Construction Newsletter No. 16

August 2023

Turbines (from left to right) 17, 20, 19, 18 & 21  
Collector Group 2-West  
16 August 2023

## Blasting

Due to geotechnical conditions on site, controlled blasts are required at some turbine foundations, with the first commencing in mid-December 2022. For those locations where blasting is required, one controlled blast per turbine foundation is expected.

The controlled blasts are contained with exclusion zones implemented and neighbours are notified ahead of the blasting work.

## Out of hours work

Standard construction hours are generally restricted to 7am to 6pm Monday to Friday and 8am to 1pm Saturday. Since November 2022 some construction activities at Flyers Creek have been carried out on Saturday afternoons and Sundays.

The work does not involve any highly intrusive noise generating activities, with no heavy vehicle truck movements on public roads on Sundays.

The out of hours work may also include turbine installations as this work requires optimal weather conditions, specifically low winds. The turbine installation work may continue between 6pm and 12am weekdays and on Saturday afternoons and Sundays in favourable weather conditions.

The turbine installation work will only occur outside standard construction hours if weather conditions are favourable.

For further information about Flyers Creek Wind Farm, or to be added to our mailing list please email: [flyerscreek@iberdrola.com.au](mailto:flyerscreek@iberdrola.com.au)

You can also provide feedback about the project to Iberdrola by phone or post at all times:

• Phone (24-hour line): 1800 917 372

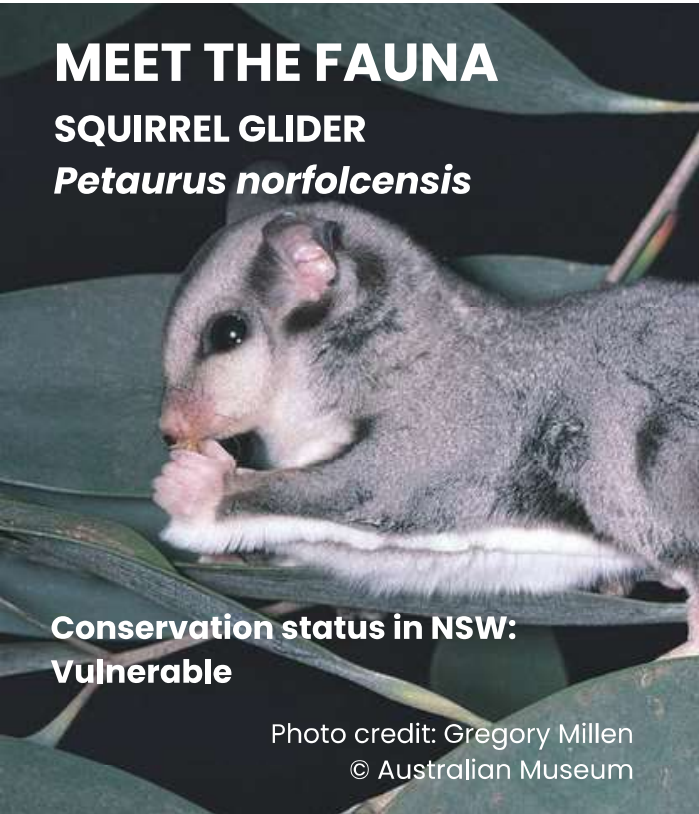
• Post: Iberdrola Australia, Level 22 Governor Phillip Tower, 1 Farrier Place, Sydney, NSW, 2000

<https://www.iberdrola.com.au/our-assets/development-assets/flyers-creek-wind-farm/>

## MEET THE FAUNA

### SQUIRREL GLIDER

#### *Petaurus norfolcensis*



**Conservation status in NSW:**  
**Vulnerable**

Photo credit: Gregory Millen  
© Australian Museum

The squirrel glider is a nocturnal native marsupial gliding possum. It is considerably larger and less common than the well-known sugar glider, but closely related.

The habitat of squirrel gliders is a mix of eucalypts, acacias and also banksias. They generally feed on insects and fruit, as well as tree sap, pollen, nectar, leaves, and bark. Squirrel gliders require hollows in trees which provide shelter and nesting.

Ecology surveys have indicated that vegetation to be removed within the project footprint east of Gap Road supports a population of squirrel gliders. In order to reduce impacts to this threatened species, hollow branches and logs from felled trees on site are being installed in retained trees to increase the habitat for squirrel gliders. The project team is also investigating the installation of gliding poles for improved connectivity between patches of vegetation.



Photo credit: © David Wheland



Installed squirrel glider hollow on site

For further information about Flyers Creek Wind Farm, or to be added to our mailing list please email: [flyerscreek@iberdrola.com.au](mailto:flyerscreek@iberdrola.com.au)

You can also provide feedback about the project to Iberdrola by phone or post at all times:

- Phone (24-hour line): 1800 917 372

- Post: Iberdrola Australia, Level22 Governor Phillip Tower, 1 Farrier Place, Sydney, NSW, 2000

<https://www.iberdrola.com.au/our-assets/development-assets/flyers-creek-wind-farm/>